

**Cherokee
Unisex
Theatre Scrub Tunics**

Finished Measurement Size Chart



*Measurement B is all around

Diagram 2 - 4700

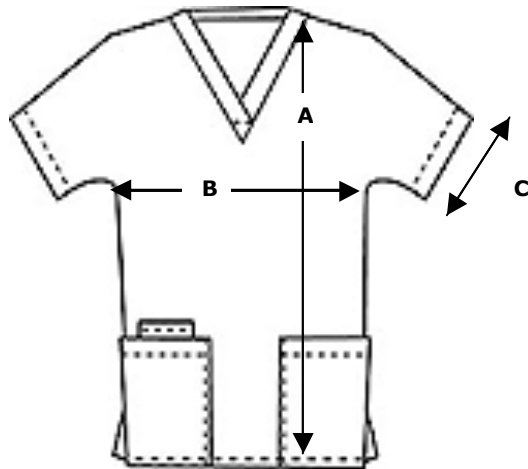


Diagram 2 - 4777



| | XS | | SML | | MED | | LGE | | XL | | XXL | | XXXL | |
|------------|-----|------|-----|------|-----|-----|-----|-----|-----|-----|------|-----|------|-----|
| | ins | cms | ins | cms | ins | cms | ins | cms | ins | cms | ins | cms | ins | cms |
| A | 27 | 68.5 | 27 | 68.5 | 28 | 71 | 29 | 74 | 29 | 74 | 29.5 | 75 | 30 | 76 |
| * B | 41 | 104 | 43 | 109 | 46 | 117 | 50 | 127 | 53 | 135 | 57 | 145 | 60 | 52 |
| C | 7 | 18 | 7.5 | 19 | 8 | 20 | 8 | 20 | 8.5 | 21 | 9.5 | 24 | 9.75 | 25 |

Diagram 1 is 4700 Tunic, bottom pockets with side vents
Diagram 2 is 4777 Tunic, top pocket without side vents

Tolerance +/- 5%

AWB Textiles

Union Mill, Hillhead, Stratton, Bude,
Cornwall, EX23 9AL

www.firstchoicescrubs.co.uk

email: info@firstchoicescrubs.co.uk

Tel: +44 (0)1288 353281

Fax: +44(0)1288 353085