

AWBtextiles

Healthcare Clothing & Workwear



1st
Choice
Clothing



**XTREME
STRETCH**



AW Bent Ltd. Union Mill, Bude, Cornwall, EX23 9AL
Tel: 01288 353281 Fax: 01288 353085 E-mail: info@awbtextiles.co.uk www.awbtextiles.co.uk



CONTENTS

Page 3

Dickies Mock Wrap Tunic

Page 4 & 5

Dickies Scrub Range

Page 6 & 7

Dickies X-Treme Stretch Scrub Range

Page 8 & 9

First Choice Scrub Range

Page 10 & 11

Cherokee Scrub Range

Page 12

**Galaxy Healthcare Tunic
Anywear Clogz**

Page 13

Embroidery Service

Page 14

Maternity Range

Page 15

Dickies Workwear

- **With over 70 years of experience, we are one of the leading suppliers of clothing to the healthcare industries.**
- **Based in North Cornwall, our company is run as a family concern.**
- **No minimum order.**
- **Most items are available from stock.**

How to Order

Telephone: **01288 353281**

Fax: **01288 353085**

Email: **info@awbtextiles.co.uk**

On line: **www.awbtextiles.co.uk**

Office Opening Hours - Mon-Fri 8.00am until 5.00pm

Dickies Workwear Shop - Mon-Sat 8.30am until 5.00pm

If you are a business and would like to open an account we ask for all first orders to be pre-paid and subsequent orders can be invoiced, terms are strictly 28 days

How to Pay

We accept the following



BACS - please ask for our bank details

Cheques (made payable to A W Bent Ltd)

Despatch

- Order before midday on any weekday and we will aim to send your garments out the same day or next working day (subject to stock) – please allow 5 working days. Please allow an extra 1 to 5 days for personalised goods
- Order before midday and upgrade to courier and your garments will be despatched same day (subject to stock) to arrive next working day (UK mainland only)

Trade Enquiries

Trade enquiries welcome, please call 01288 353281





Available colours



Ceil with Navy binding



Navy with Ceil binding



Black with Shocking Pink binding



Shocking Pink with Black binding



Orchid with Iris binding



Iris with Orchid binding



Royal with Black binding



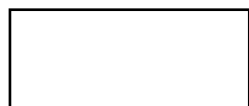
Wine with Black binding



Hunter Green with Black binding



Turquoise with White binding



White with White binding



Dickies Mock Wrap Top - HC11601

- Classic fit mock wrap
- Contrast colour trim
- Side vents and tie back for extra comfort
- Patch pockets
- Size XS-3XL, Length 28"



Size Chart

Wraps Size Comparison

	XS	S	M	L	XL	2XL	3XL
Dress Size	8/10	12	14	16	18	20	22
Bust Size	32/80	34/85	37/92	40/100	42/105	44/110	46/115



MEDICAL UNIFORMS



Dickies Unisex Chest Pocket Tunic - HC10106

- 1 chest pocket with pen division
- Side vents for comfort
- Comfortable 65/35 poly/cotton fabric, 175gsm
- Size XS-3XL, Length 28" approx



Dickies Unisex Multi Hip Pocket Tunic - HC10506

- 2 roomy hip pockets
- Side vents for comfort
- Comfortable 65/35 poly/cotton fabric, 175gsm
- Size XS-3XL, Length 28" approx



Available in a choice of 11 colours

Black	Ceil	Hunter Green	Iris
Navy	Orchid	Royal Blue	Shocking Pink
Turquoise	White	Wine	

See page 13 for details on our *Embroidery Service*

Size Chart

Unisex	XS	S	M	L	XL	2XL	3XL
Chest/Bust	31-34	35-37	38-40	41-44	45-48	49-52	53-56

Sizes are for guidance only.

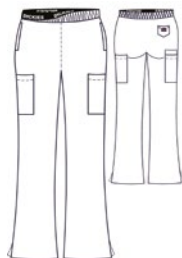


MEDICAL UNIFORMS



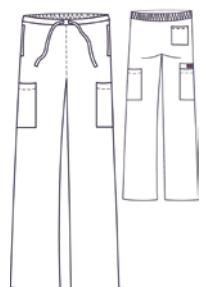
Dickies Ladies Boot Cut Trousers - HC53102

- 'Hip Flip' elastic waistband
- 2 pockets, cargo pocket and rear mini pocket
- Vents at hem
- Size XS-3XL, Inside leg length 31"



Dickies Unisex Tie Waist Trousers - HC50601

- Classic cut
- 2 pockets, cargo pocket and rear patch pocket
- Waist is drawstring front & elasticated at back, false fly detail
- Size XS-3XL, Inside leg length 31"



Available in a choice of 11 colours

Black	Ceil	Hunter Green	Iris
Navy	Orchid	Royal Blue	Shocking Pink
Turquoise	White	Wine	

Size Chart

Unisex	XS	S	M	L	XL	2XL	3XL
Waist	24-27	28-30	31-34	35-38	39-42	43-46	47-50
Hip	32-35	36-38	39-41	42-44	45-48	49-52	53-56

Sizes are for guidance only.

XTREME STRETCH



Fabrication

- Soft fabric made up of: 75% Polyester / 21% Rayon / 4% Spandex Twill
- 4-way stretch fabric for ease of movement
- Smooth to touch; cool to wear
- Comfortable and durable

Care

- Easy care
- Wash and wear
- Little or no ironing

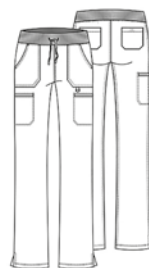
X-Treme Stretch Rib Knit Trousers - DK020

A contemporary fit, mid rise, straight leg pant featuring an elastic rib knit waistband with a functional drawstring. It features six pockets; two front pockets, two cargo pockets, two back pockets, a utility D-ring, and side vents.

Poly/Rayon/Spandex Twill

Sizes XS to XXL

Inside leg: 30 1/2"



Xtreme Stretch V-neck Top - 82851

The v-neck top features decorative logo eyelets at front. Princess strapping just above the vents, front patch pockets plus a mobile phone pocket. Also includes a self tab and a utility "D" ring completed by logo eyelets. Back Princess seams for added shape.

Poly/Rayon/Spandex Twill

Sizes XS to XXL

Length 26"



Size Chart

	XS	S	M	L	XL	2XL
Chest/Bust	32-33	34-35	36-38	39-42	43-46	47-50
Waist	24-25	26-27	28-30	31-34	35-38	39-42
Hip	35-36	36-37	38-40	41-44	45-48	49-52
Inside leg: Regular 30.5						Sizes are for guidance only.
	XS	S	M	L	XL	2XL
Dress size	8/10	10/12	12/14	14/16	16/18	20/22

Available in a choice of 10 colours





1st Choice V-Neck Unisex Scrub Suit

Generously cut for comfort from polyester cotton. The v-neck tunic is fully reversible for ease of laundering. There is one lower pocket always available to the user on the outside and one on the inside. The trousers have a tie waist and a back pocket.

They can be purchased as suits or separates.

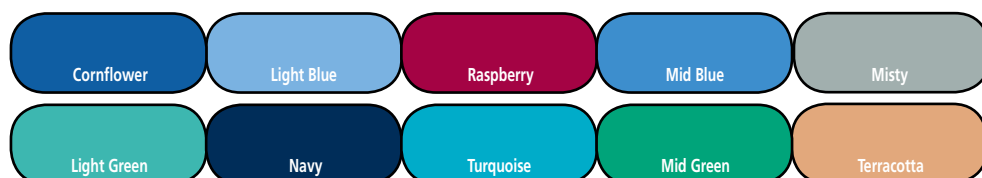
Available in ten colours.

Fabric: 50% Polyester / 50% Cotton, 145gsm

Sizes: XS - 3XL



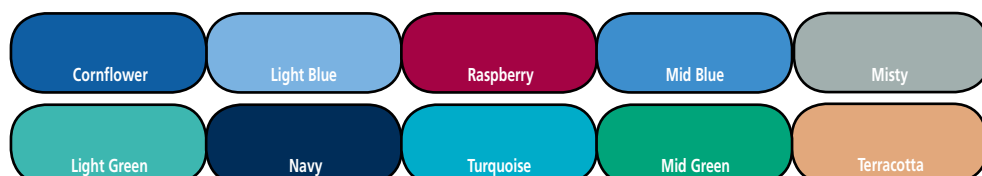
Available in 10 colours





**You can buy the 1st Choice V-Neck Unisex Scrub Suit
Tops & Trousers separately**

Available in 10 colours



**See page 13 for
details on our
*Embroidery Service***

First Choice suits are available in a range of seven sizes, shown in the table below. In the First Choice range, all tops have a colour coded neck trim and trousers have a colour coded drawstring, to help you quickly identify the right size.

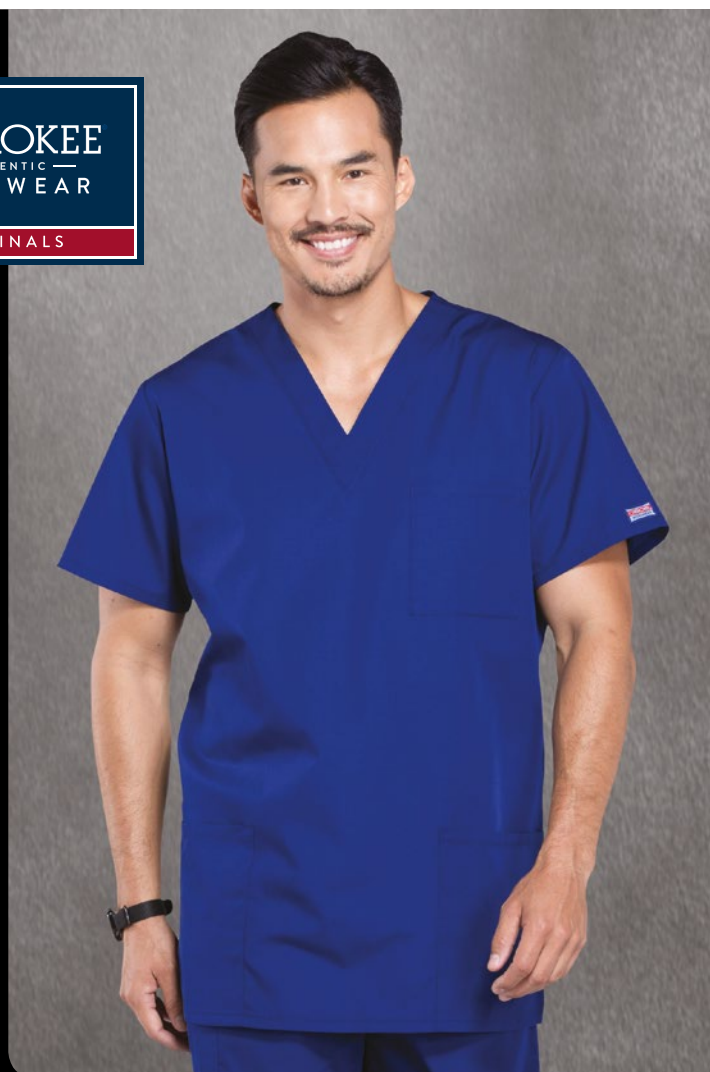
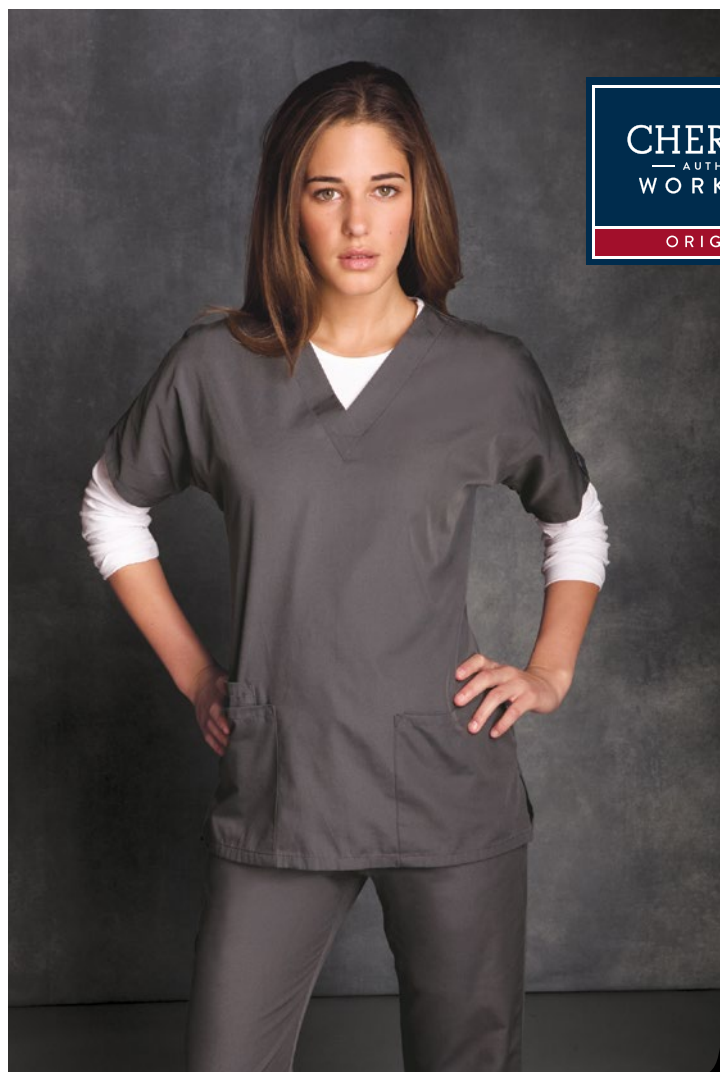
Neck Trim/ Drawstring Colour (First Choice only)	Trousers		Tunic		Dress Size
	Imperial (inches)	Metric (cm)	Imperial (inches)	Metric (cm)	
XS - Pale Blue	26-28	65-70	30-32	75-80	8/10
S - Yellow	30-32	75-80	34-36	85-90	10/12
M - Brown	34-36	85-90	38-40	94-100	14/16
L - White	38-40	95-100	42-44	105-110	18/20
XL - Pink	42-44	105-110	46-48	115-120	22/24
2XL - Orange	46-48	115-120	50-52	125-130	26/28
3XL - Red	50-52	125-130	54-56	135-140	30/32

*These sizes are
intended as a
guide only and
are approximate.*

Tops and Trousers can be sold individually

CHEROKEE
AUTHENTIC
WORKWEAR

ORIGINALS



Cherokee 4700 V-Neck Scrub Top

Featuring dolman sleeves with side vents, 2 patch hip pockets and a pen slot. Made in a hard wearing fabric with soil release finish.

Fabric: 65% Polyester, 35% Cotton, 145gsm

Sizes: XS - 3XL Centre back 26.5"



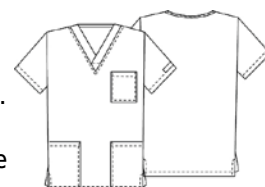
Available in 20 colours ex-stock

Please note Cherokee Scrub Suits do not have a colour coded edging.

Black	Caribbean	Galaxy	Ciel
Khaki	Navy	Olive	Orchid
Grape	Grey	Hunter	
Pewter	Red	Royal	
Shocking Pink	Surgical Green	Teal	
Turquoise	White	Wine	

Cherokee 4876 V-Neck Scrub Top

This V-neck unisex scrub top is comfortable yet durable, making it perfect for those working conditions. Made in hard wearing fabric with soil release finish and featuring three handy pockets, 1 chest pocket and 2 patch pockets and side vents.



Fabric: 65% Polyester, 35% Cotton, 145gsm

Sizes: XS-3XL Centre Back length 29"

Available in 7 colours

Black	Caribbean	Grape	Wine
Galaxy	Pewter	Navy	

Size Chart

Size	XS	S	M	L	XL	2XL	3XL
Chest cm	75-80	85-90	95-100	105-110	115-120	125-130	135-140
Chest Inches	30-32	34-36	38-40	42-44	46-48	50-52	54-58
Sizes are for guidance only.							

CHEROKEE
— AUTHENTIC —
WORKWEAR

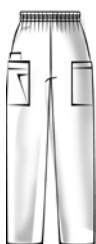
ORIGINALS

Cherokee 4200 Elasticated Waist Trousers

Cargo trousers with elasticated waist, two cargo pockets, a pen slot and an outside scissors pocket. Made in hard wearing fabric with soil release finish.

Fabric: 65% Polyester, 35% Cotton, 145gsm

Sizes: XS - 3XL



Cherokee 4100 Tie Waist Trousers

Casual unisex trousers featuring drawstring waist, one back pocket and a cargo pocket with a pen slot inside. Made in a hard wearing fabric with soil release finish.

Fabric: 65% Polyester, 35% Cotton, 145gsm

Sizes: XS - 3XL



Available in 20 colours ex-stock

Please note Cherokee Scrub Suits do not have a colour coded edging.

Black	Caribbean	Galaxy	Ciel	Grape	Grey	Hunter
Khaki	Navy	Olive	Orchid	Pewter	Red	Royal
Shocking Pink	Surgical Green	Teal				
Turquoise	White	Wine				

Size Chart

Size	XS	S	M	L	XL	2XL	3XL
Waist cm	65-70	75-80	85-90	95-100	105-110	115-120	125-130
Waist Inches	26-28	30-32	34-36	38-40	42-44	46-48	50-52
Outside Leg Inches	41	42	43.5	43.5	44	45	45.5
<i>Sizes are for guidance only.</i>							

Galaxy Healthcare Tunic

Our newest addition to our range, we have our Galaxy healthcare tunic, made from a hard wearing poly/cotton fabric.

- 2 hip pockets and 2 chest pockets
- Zip fastening
- Flattering fit with double vented back for extra comfort
- Length of tunic: approx. 30"
- Available in sizes 8-32
- 7 colours

White	Bottle Green
Purple	Mid Blue
Navy	Lilac
Dark Royal	



Anywear Clogz

ANYWEAR
Comfort from the first step



A perfect opportunity to have comfortable feet at work with our extremely lightweight Anywear Clogs. The perfect choice for nursing shoes, but also great for all healthcare professionals.

Suitable for - Doctors, Nurses, Vets, Dental Nurses, Care Assistants - to name just a few!

Navy - Available in sizes 2-8

White - Available in sizes 2-9

Black - Available in sizes 2-11

- Moulded, removable cushioned insoles with vented channels
- Swivelled back strap converts the clog from a sling back to a slide providing added versatility
- Slip resistant sole delivering long-lasting durability on a variety of surfaces
- Heel height 1 1/2"
- CE approved

Embroidery Service

Our in house Embroidery Service can enhance your practice image by the addition of your corporate logo or simply the names and positions of your staff.



Workwear Embroidery

For personalised uniforms and embroidered workwear AWB Textiles offers an embroidery service. The area covered is approximately 10cm x 4cm, with a choice of various colours and fonts. Larger areas can be embroidered, subject to sight of requirement and acceptance of our quotation.

Please bear in mind if you order an embroidered garment that it will take 1-5 days longer to despatch than a standard item as each garment is custom embroidered on-site.

We can also create embroidery for a company logo or symbol. Please contact us to discuss your needs and we will be happy to quote, or alternatively send us an image of your logo by email to:-
info@awbtextiles.co.uk



Colour Chart

This is just a general guide on colours available.

Black	Bright Pink	Dark Green	Dark Grey	Gold
Light Blue	Light Green	Light Grey	Light Pink	Lilac
Lime Green	Navy	Orange	Purple	Red
Royal Blue	White	Yellow		

Fonts

ARIAL rounded
BLACKLIGHT blacklight
BLOCK block
Chancery
SWISS swiss
KIDZ kidz

Maternity Range

cherokee flexibles®

Cherokee 2892

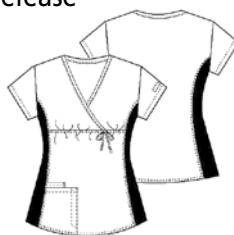
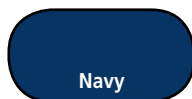
Maternity Mock Wrap Knit Panel Top

Maternity Mock wrap top features a functional drawstring, empire waist, soft and stretchy knit side panels, contrast topstitching on front and back princess seams, a patch pocket and mobile pocket. Our comfy Maternity styles are designed to support and flatter using your current size, so there's no need to size up. When ordering Cherokee Maternity styles, remember to order your pre-pregnancy size.

Fabric: Brushed 65/35 Cotton Poplin with soil release

Sizes XS to 3XL Centre back length: 27"

Colours: Available in Ciel or Navy



Size Chart

	XS	S	M	L	XL	2XL	3XL
Chest/Bust	32-33	34-35	36-37	38-40	42-44	45-46	48-50
Hip	34-35	36-37	38-39	40-42	43-45	46-48	49-52

Sizes are for guidance only.

Cherokee 2092

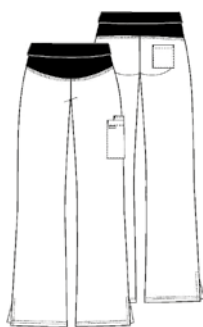
Maternity Knit Waist Pull-on Pant

Maternity, adjustable rise, flare leg pant features contrast topstitching, a double cargo pocket, side vents and a soft stretchy, built-for-comfort-in-the tummy panel that grows with you. Our comfy Maternity styles are designed to support and flatter using your current size, so there's no need to size up. When ordering Cherokee Maternity styles, remember to order your pre-pregnancy size.

Fabric: Brushed 65/35 Cotton Poplin with soil release

Sizes XS to 3XL Length: Inseam: 31"

Colours: Available in Ciel or Navy



Size Chart

	XS	S	M	L	XL	2XL	3XL
Chest/Bust	32-33	34-35	36-37	38-40	42-44	45-46	48-50
Hip	34-35	36-37	38-39	40-42	43-45	46-48	49-52

Sizes are for guidance only.





WORKWEAR



Redhawk Warehouse Coat WD200

Two hip pockets and one chest pocket, press stud fastening

Fabric: 65% polyester, 35% cotton, 260gsm

Sizes: XS*, S, M, L, XL, XXL
(*XS in White only)

Colour: Navy, White



High Visibility Bomber Jacket SA22050

EN471: 2003 + A1: 2007 Class 3 Level 2

EN343: 2003 + A1: 2007 Class 3 Level 1

Fabric: 100% polyester 300D PU Coated. Lining 180T Polyester quilted. Polyester filling, 180gsm.

Sizes: S, M, L, XL, XXL, 3XL, 4XL

Colour: Saturn Yellow

Redhawk Super Work Trousers WD884

Two front pockets and two rear pockets with buttoned fastening. Cargo style pockets with button fastening. External knee pad pouches

Fabric: 65% polyester, 35% cotton, 260gsm

Sizes: Leg S 30", R 32", T 34". Waist 28" 48"

Colour: Black, Grey



Short Sleeve Polo Shirt SH21220

Fabric: 65% Polyester, 35% Cotton, 200gsm
(Mid Grey – 85% Cotton, 15% Viscose)

Sizes & Colour:

Black, Bottle Green, Mid Grey & Navy – S to 4XL

Burgundy, Royal & White – S to 3XL

Red – S to 2XL



Highway Safety Waistcoat SA22010

EN471: 2003 + A1: 2007 Class 2 Level 2

Fabric: 100% knitted polyester tricot, 120gsm

Sizes: S, M, L, XL, XXL, 3XL, 4XL

Colour: Saturn Yellow



We stock a larger range of Dickies work wear at our factory and if you don't see what you want here please give us a call or send us an email and we will be pleased to help.

Factory outlet situated on A39 in Stratton, Bude, North Cornwall

AWB have been providing Healthcare Uniforms for over 70 years



AWBtextiles

Healthcare Clothing & Workwear

AW Bent Ltd. Union Mill, Bude, Cornwall, EX23 9AL

Tel: 01288 353281 Fax: 01288 353085

E-mail: info@awbtextiles.co.uk www.awbtextiles.co.uk